

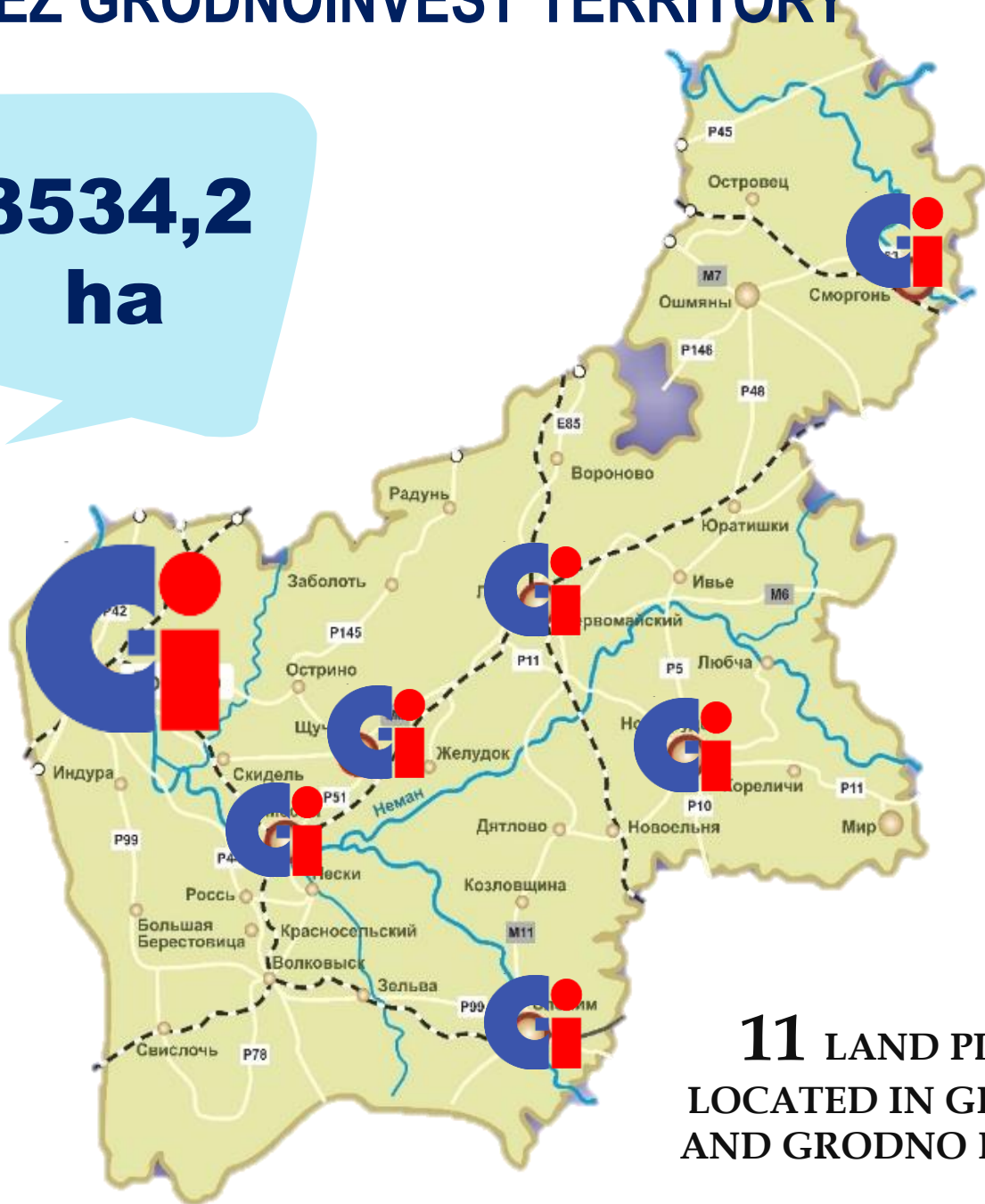


BUSINESS OPPORTUNITIES IN FEZ GRODNOINVEST

GRODNO, BELARUS

FEZ GRODNOINVEST TERRITORY

3534,2
ha



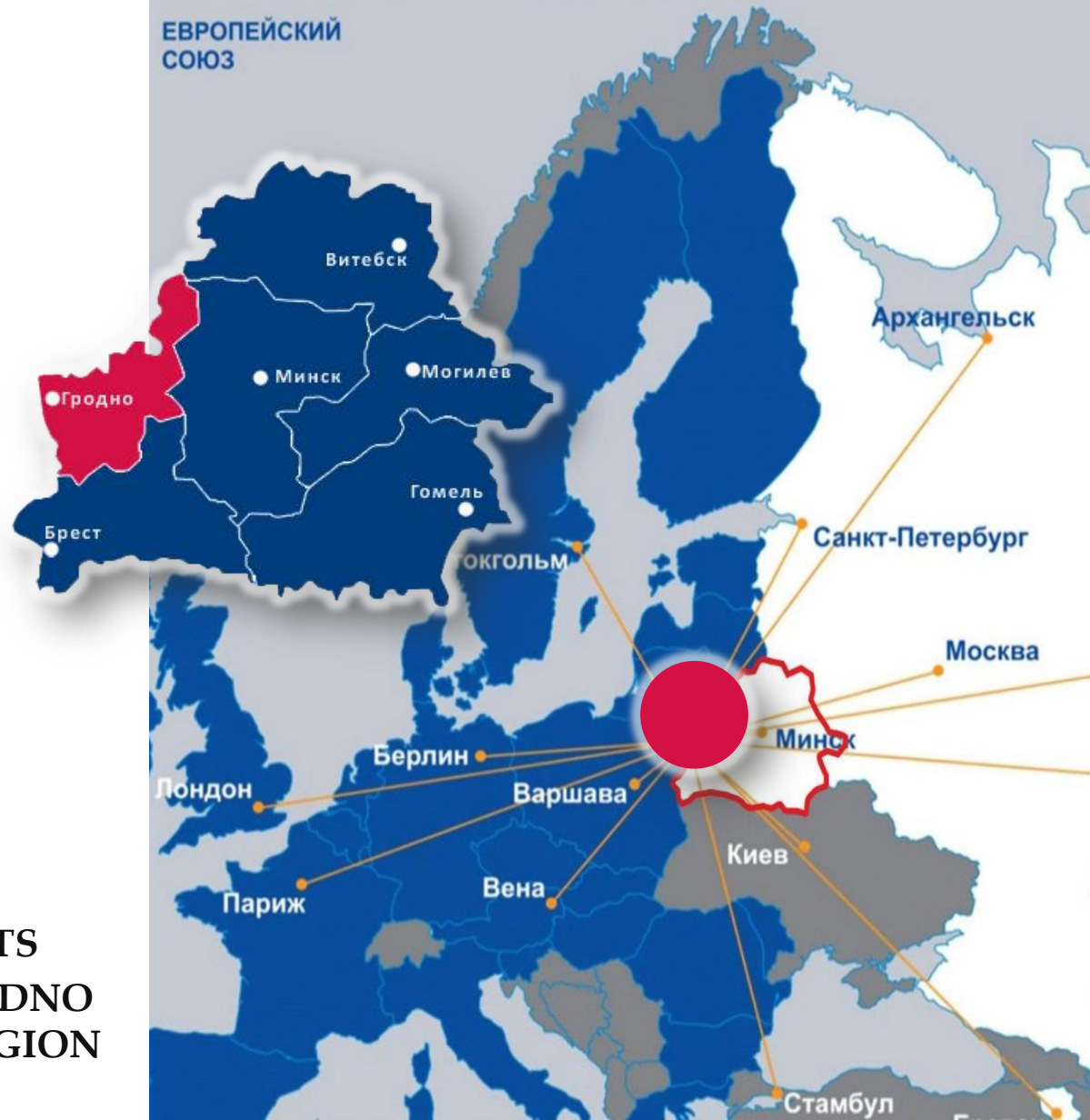
11 LAND PLOTS
LOCATED IN GRODNO
AND GRODNO REGION



ЕВРОПЕЙСКИЙ
СОЮЗ



ЕВРАЗИЙСКИЙ
ЭКОНОМИЧЕСКИЙ
СОЮЗ

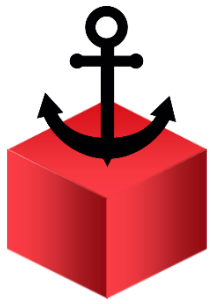


FEZ GRODNOINVEST LOCATION

AT THE CROSSROADS OF TWO LARGEST ECONOMIC ALLIANCE: THE EUROPEAN UNION AND THE EURASIAN ECONOMIC UNION

TRANSPORT GATE "EUROPE - ASIA" OF THE GREAT SILK ROAD





4 SEAPORTS
IN THE RADIUS OF 400 KM

- KALININGRAD
- GDANSK
- KLAIPEDA
- RIGA



5 INTERNATIONAL AIRPORTS
IN THE RADIUS OF 250 KM

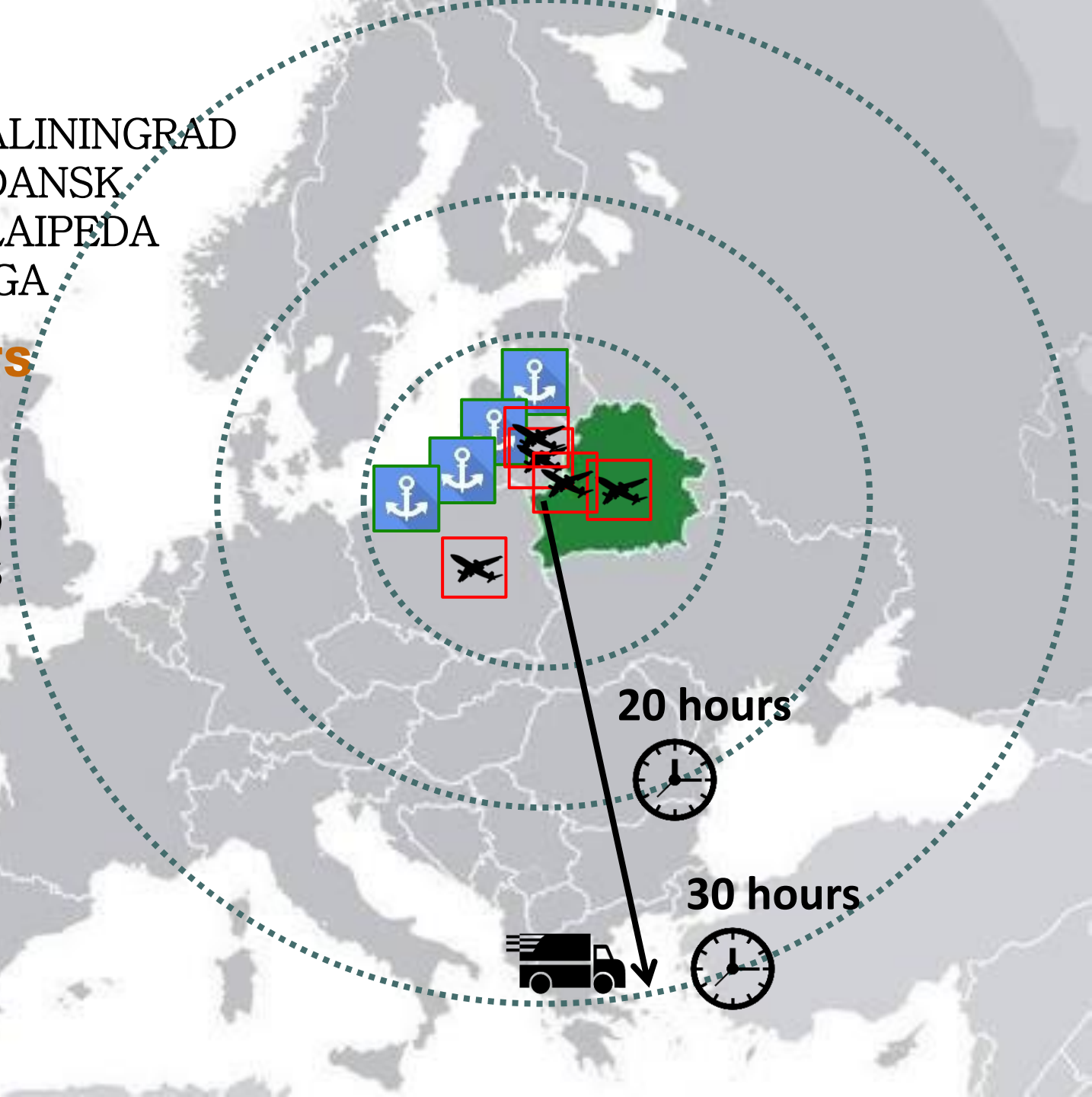
- MINSK
- VILNIUS
- WARSAW
- GRODNO
- KAUNAS



EASTERN AND WESTERN
RAILWAY TRACK



DIVARICATE HIGHWAY
NETWORK

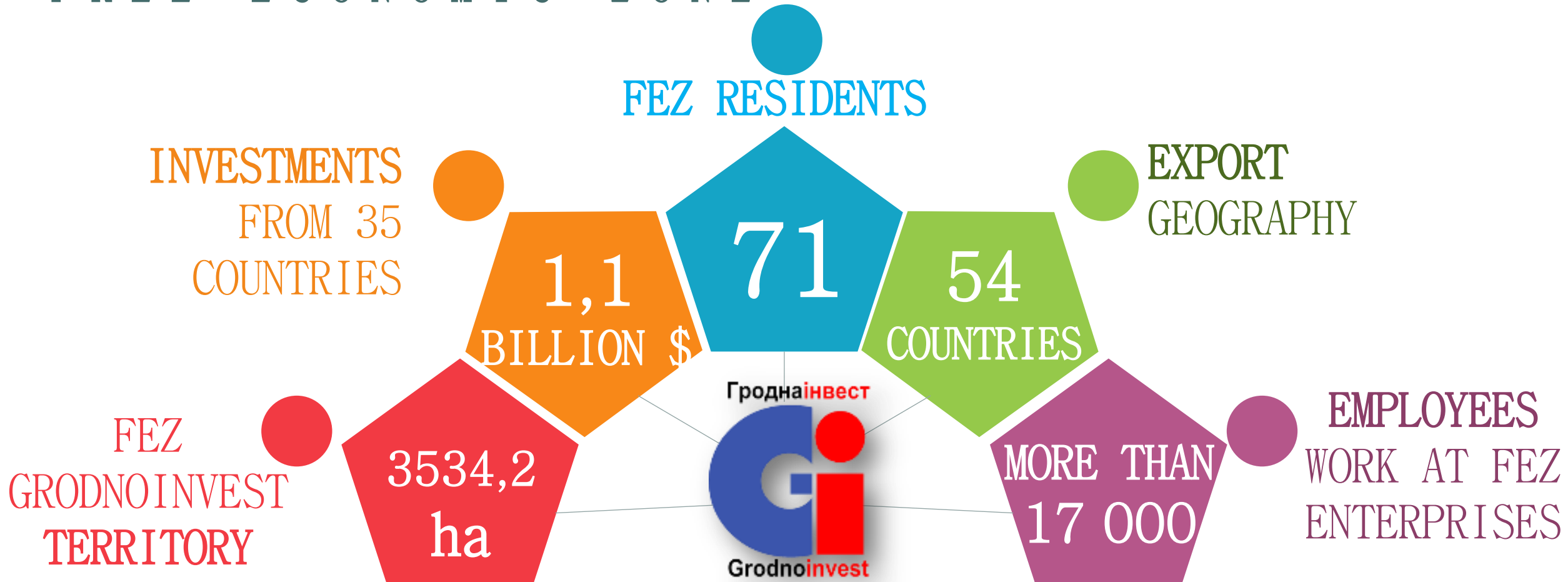


20 hours



30 hours





TAX PREFERENCES



PROFIT TAX EXEMPTION FOR 10 YEARS



AFTER 10 YEARS, THE TAX IS PAID AT A RATE REDUCED BY 50%



REAL ESTATE TAX EXEMPTION



LAND RENT EXEMPTION

THE TAX CHARGE IS REDUCED BY



Gi GRODNO INVEST

FREE ECONOMIC ZONE

CUSTOMS PREFERENCES

1

FREE CUSTOMS ZONE (FCZ)

2

IMPORT OF
EQUIPMENT AND RAW
MATERIALS



FCZ

FCZ



0%

EXPORT OF
FINISHED PRODUCTS
OUTSIDE OF THE
CUSTOMS UNION

SUPPLIES BETWEEN
RESIDENTS

0%

**CLUSTERING
TACTIC**



**WOOD PROCESSING
CLUSTER**



**AUTOMOTIVE AND
METALWORKING
CLUSTER**



**LIGHT INDUSTRY
CLUSTER**



**LOGISTICS
CLUSTER**



**CHEMICAL
CLUSTER**



**TOURISM
CLUSTER**



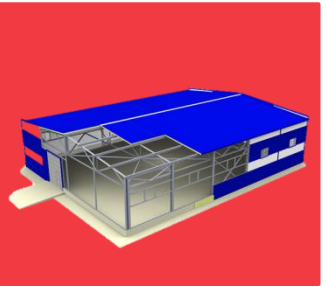
**AGROINDUSTRY
CLUSTER**

COOPERATION MODELS



GREENFIELD PROJECTS

Land plots (more than 600 ha) provided with all necessary engineering and transport infrastructure



BROWNFIELD PROJECTS

Free production premises (more than 200 000 m²) at working industrial enterprises



PRODUCTION COOPERATION

Joint venture companies
Contract manufacturing
Orders



TRADE

Trade contracts with FEZ Grodnoinvest residents



ADMINISTRATIVE PROCEDURES

INVESTORS

ADMINISTRATION OF FEZ GRODNOINVEST



DOCUMENTS



- FULL SUPPORT OF THE PROJECT
- CONSULTING

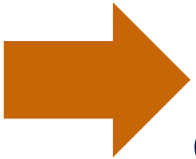
BUSINESS PLAN OF THE PROJECT



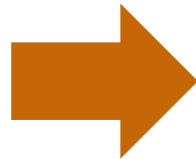
REGISTRATION OF FEZ RESIDENT



- COPIES OF THE LEGISLATIVE DOCUMENTS
- APPLICATION FORM
- CONFIRMATION OF PAYMENT OF STATE FEE FOR REGISTRATION AS A RESIDENT OF FEZ



2 weeks
Examination of documents and decision on registration of the resident



AVGUSTOV CANAL



TOTAL AREA
5 749,88 ha

TAX PREFERENCES

- PROFIT TAX
- REAL ESTATE TAX
- VAT

↓ **70%**



WELCOME TO THE

Gi GRODNO INVEST FREE ECONOMIC ZONE



The Republic of Belarus
Grodno, 230005
Gorkogo str., 91A



www.grodnoinvest.by
info@grodnoinvest.by
Skype: grodnoinvest



Tel: + 375 (152) 43-01-75
Fax: + 375 (152) 43-12-18

